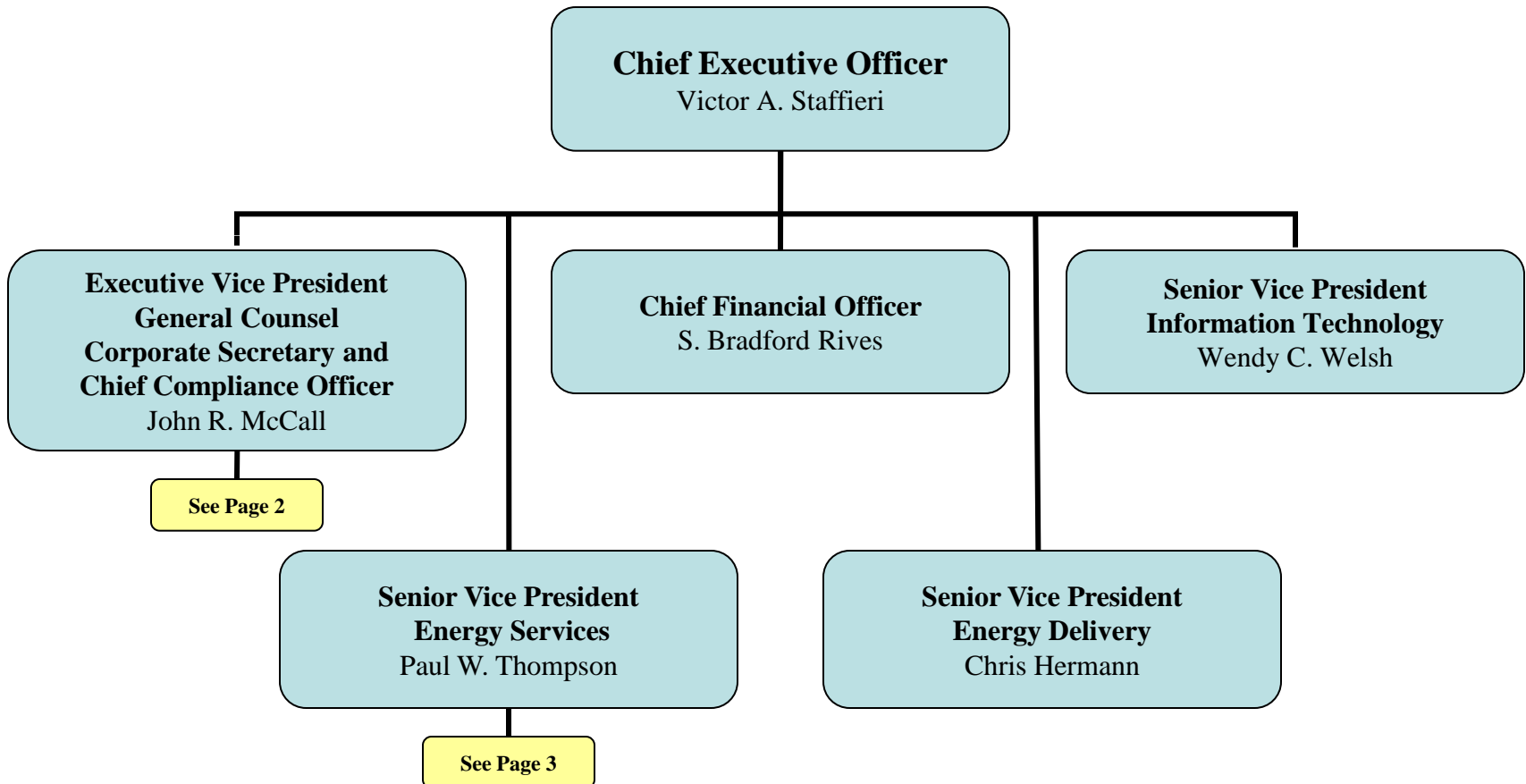


E.ON U.S. LLC

Chain of Command

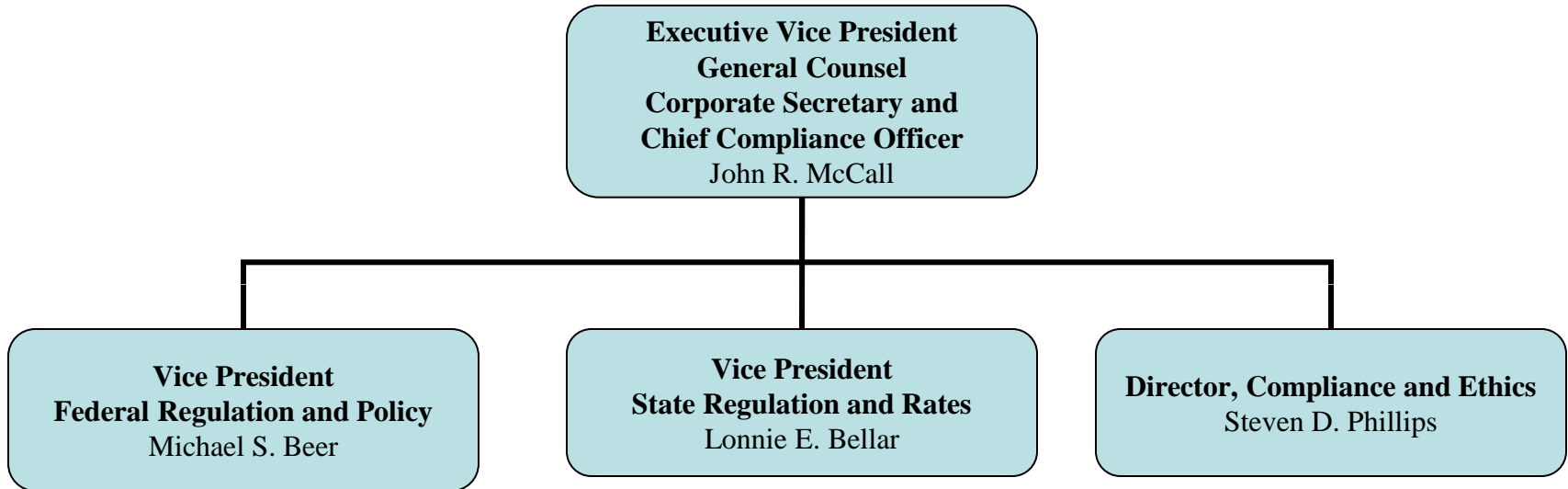
July 2009



E.ON U.S. LLC

Chain of Command

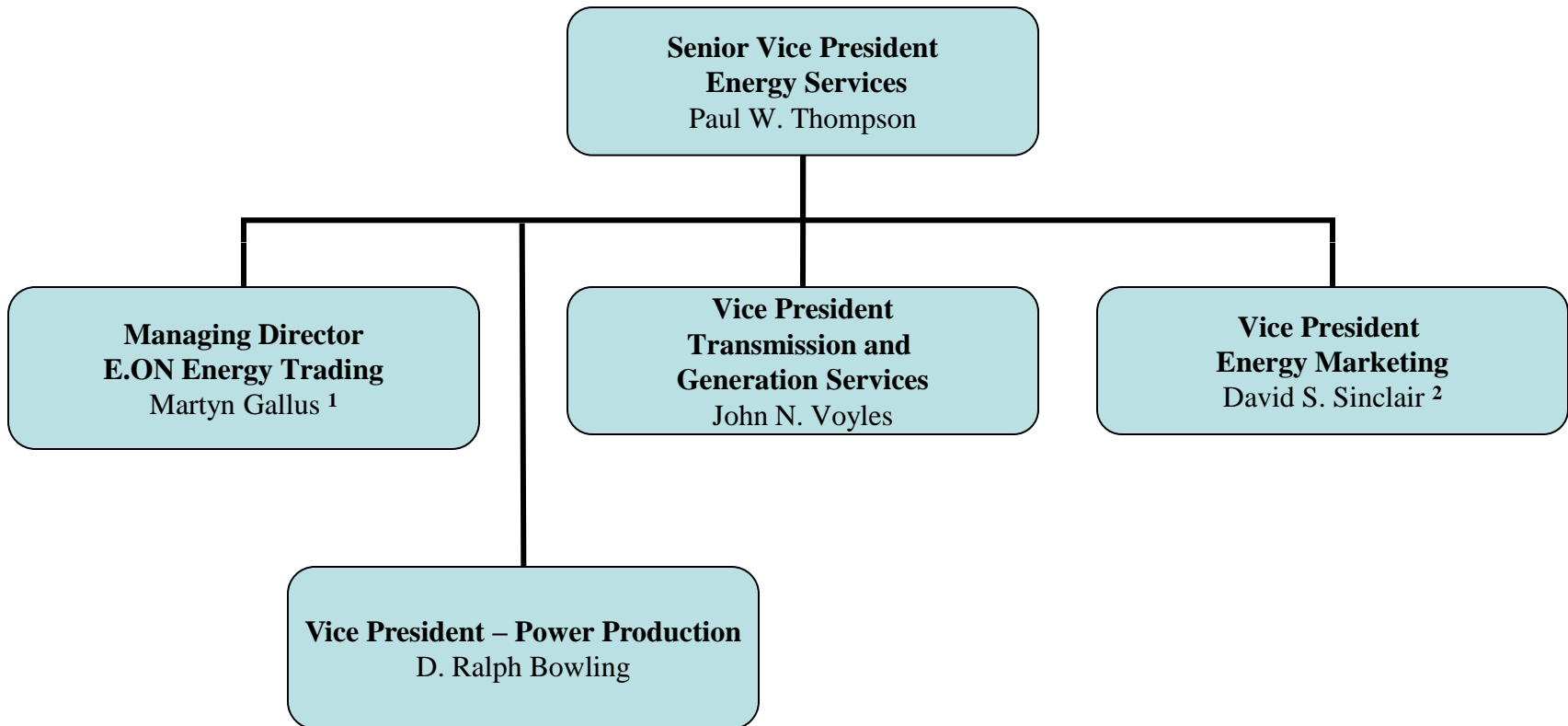
July 2009



E.ON U.S. LLC

Chain of Command

July 2009



Notes:

1. Prior to January 1, 2008, Mr. Gallus was Senior Vice President, Energy Marketing.
2. Prior to January 31, 2008, Mr. Sinclair, as Director – Engineering, Planning, Analysis, and Forecasting, had temporary responsibility for Energy Marketing.